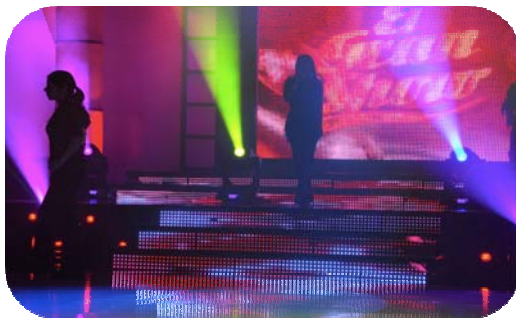


Flexled Video System

Project application overview:



FLEXLED Video System is flexible, thin. Can be curved, rolled, bended, arced for easily mount around almost any shape. Here are a few thoughts to get you started:

TV studio Stairs&Wall
Staging Stairs&Wall
Events
Decorating
Advertising

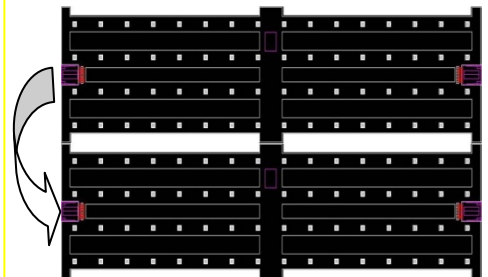
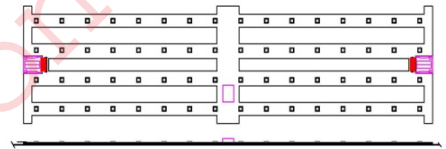
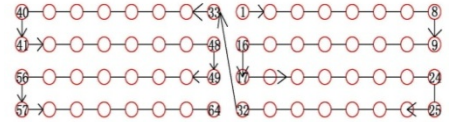


Technical bit:

Module	
● Size(w/h):	500mm/125mm (size can be customized)
● Brightness(nits or cd/m ²):	1,500-2,000
● Refresh rate(Hz):	800
● Resolution (pixels):	16×4
● Resolution(pixels m ²)	1024
● Viewing angle(h/v)	120° /120°
● Weight(kg/unit)	0.2
● Storage temperature(°C):	-40 to +80
● Operating temperature(°C):	-20 to +60
● Grey Scale (Linear):	256 levels/color
● Display Color:	4.4 trillions
● Control Driving Mode:	Static Driving
● Sug. Min. Viewing Distance:	>20m

Pixel	
● Pitch(mm):	31.25mm
● Pixel configuration (RGB):	3 in 1
● LED type:	SMD
● LED lifetime(hours):	75,000

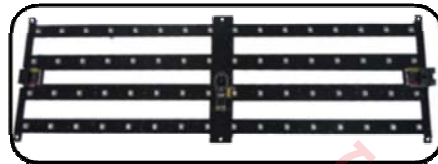
Power	
● Input Voltage(VAC):	110 /220V ± 15%
● Input Power frequency(HZ):	50/60
● Power consumption:	Average: 3.5
(watts per module)	Maximum: 10



Product feature:

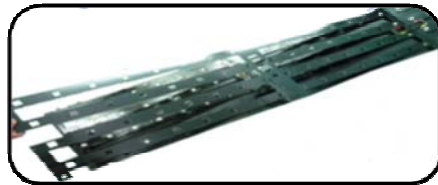
A. TRULY FLEXIBLE MODULE DESIGN

Flexled is made of 0.8mm printed circuit Board, with special array of circuit Electronic elements, it Can be curved And attached to small size place like Stage Stairs and small wall, to create magic viewings



B. PROTECTED BY PLASTIC COVER

In consider of safety of the Led and thin pcb, a plastic Cover was design to be cover on the unit module.



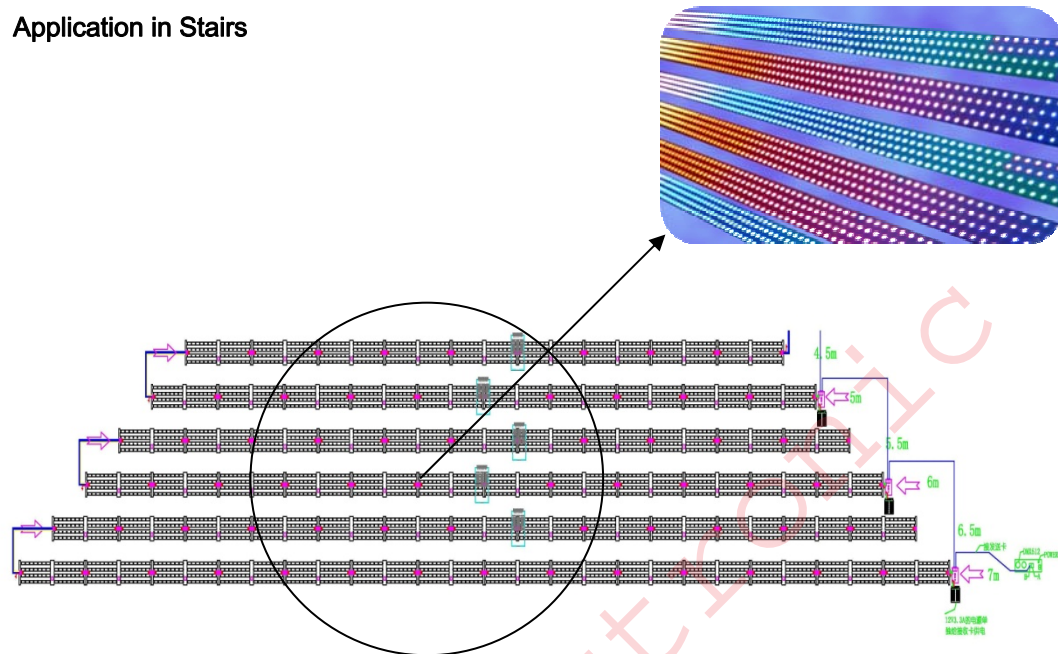
C. RUBBER-BASED MODULES

A Plastic Base was applied in the Design, It fasts the installation for any events



Installation Diagram

Application in Stairs



System Diagram

